

KPAC History

The Kachina Peaks Avalanche Center (KPAC) was founded in 2005 in response to the increasing winter backcountry use on the San Francisco Peaks of northern Arizona, also known as the Kachina Peaks. KPAC was formed by a concerned group of users comprised of professional ski patrollers, search and rescue professionals, recreational enthusiasts, and university educators and researchers.

Record snowfall in the winter of 2004 -2005 lured far more users onto the Peaks than in recent years, and several human-triggered avalanches were reported. Large, landscape-altering natural avalanches occurred as well. In a climate as



variable as northern Arizona, it is critical to keep winter recreationists aware of the realm they are entering, and provide the educational tools needed to travel safely.

KPAC Mission Statement

The mission of Kachina Peaks Avalanche Center, Inc. is to provide support for and to engage in avalanche education, safety training and information exchange specific to the San Francisco Peaks in Northern Arizona

Place

Postage

Here

Kachina Peaks Avalanche Center, Inc.

212 Dunnam St.
Flagstaff, AZ 86001

<http://www.kachinapeaks.org>
E-mail: info@kachinapeaks.org



KACHINA PEAKS AVALANCHE CENTER, INC.



Avalanches in Arizona?

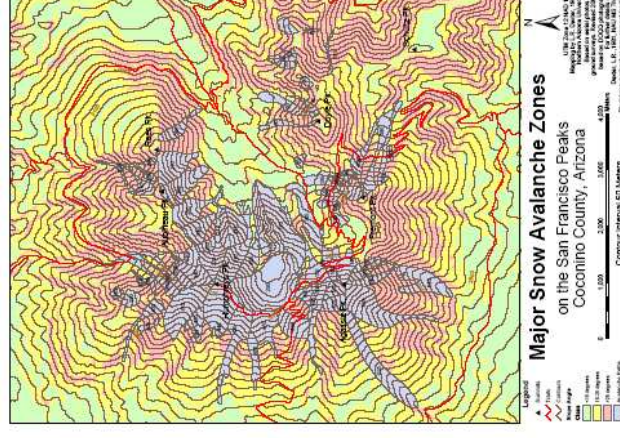
It's a question we hear frequently. The Peaks are home to deep snowpacks, steep terrain, and strong winds, three important ingredients for avalanche activity. These ingredients also attract winter backcountry enthusiasts in greater numbers. Many are not familiar with avalanche hazards, and are not prepared for the winter mountain wilderness. Search and rescue activities on the Peaks supports these facts.

If you are a skier, snowboarder, snowshoer, or other winter backcountry user, it is essential to understand the unforgiving nature of winter mountain hazards, including avalanches. Scattered over the Peaks' high country are numerous large and small avalanche paths. Some even exist within the Arizona Snowbowl Ski Area. Within Snowbowl, these areas are studied and controlled by ski patrol.

There is no avalanche control, forecasting, or patrol beyond the ski area boundary. Rescue can be many hours away. Safety is your responsibility. Get educated!

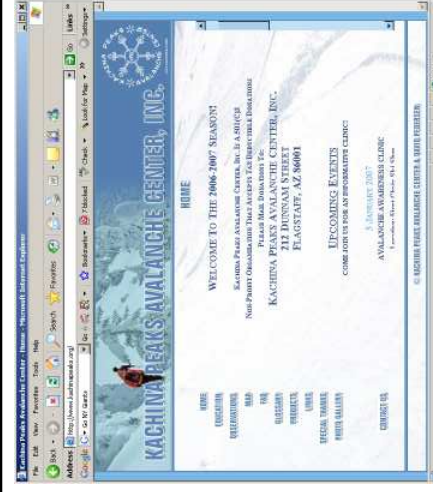
Services Provided by KPAC

- Free Monthly Avalanche Awareness Clinics
- Levels 1 & 2 Avalanche Certification classes in conjunction with Prescott College, using American Avalanche Association curriculum guidelines
- Dissemination of avalanche and snow safety literature
- Events, such as films, to raise awareness of the winter backcountry environment
- Networking opportunities for various agencies, such as Coconino County Search and Rescue, the US Forest Service, Northern Arizona University, etc.
- Academic research on avalanches, snow, and the people that interact with them
- Future goals include avalanche forecasting, but this service is not provided at this time



(by Leland Dexter, Northern Arizona University
full-size map downloadable at kachinapeaks.org)

Our Website:



The KPAC website, kachinapeaks.org, is the hub for finding information on all KPAC does. Get dates for clinics and other events, post/read current snow observations, link to other sites with useful avalanche information, and more.

HOW YOU CAN HELP SUPPORT KPAC:

The Kachina Peaks Avalanche Center is a 501(c)3 incorporated non-profit organization. Your tax-deductible contribution will assist us with organizing classes and clinics, maintaining our website, and generally helping to maintain a safe environment for backcountry winter recreation on the Peaks.

Contributions may be sent to:

Kachina Peaks Avalanche Center, Inc.
212 Dunnam St.
Flagstaff, AZ 86001